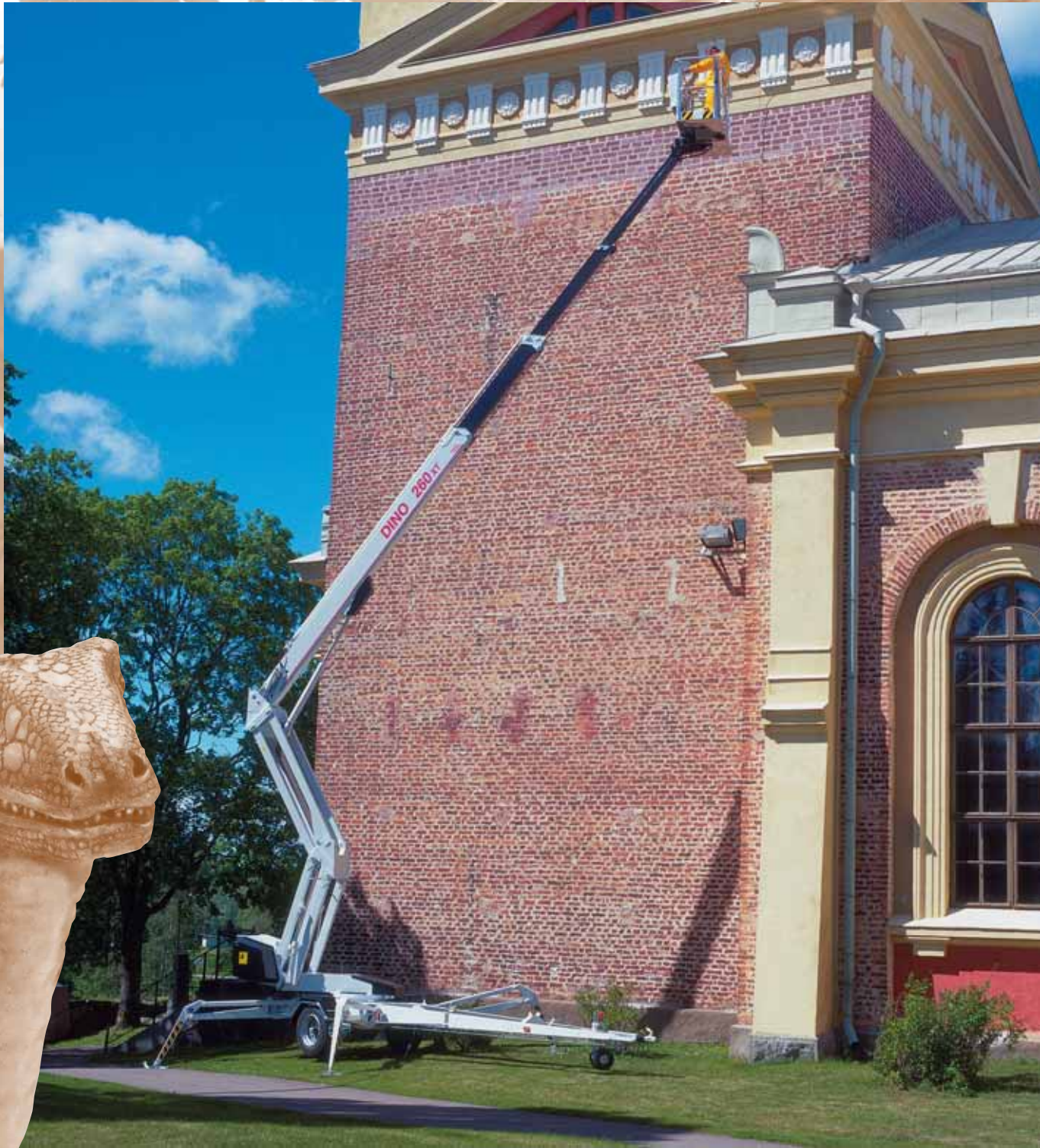
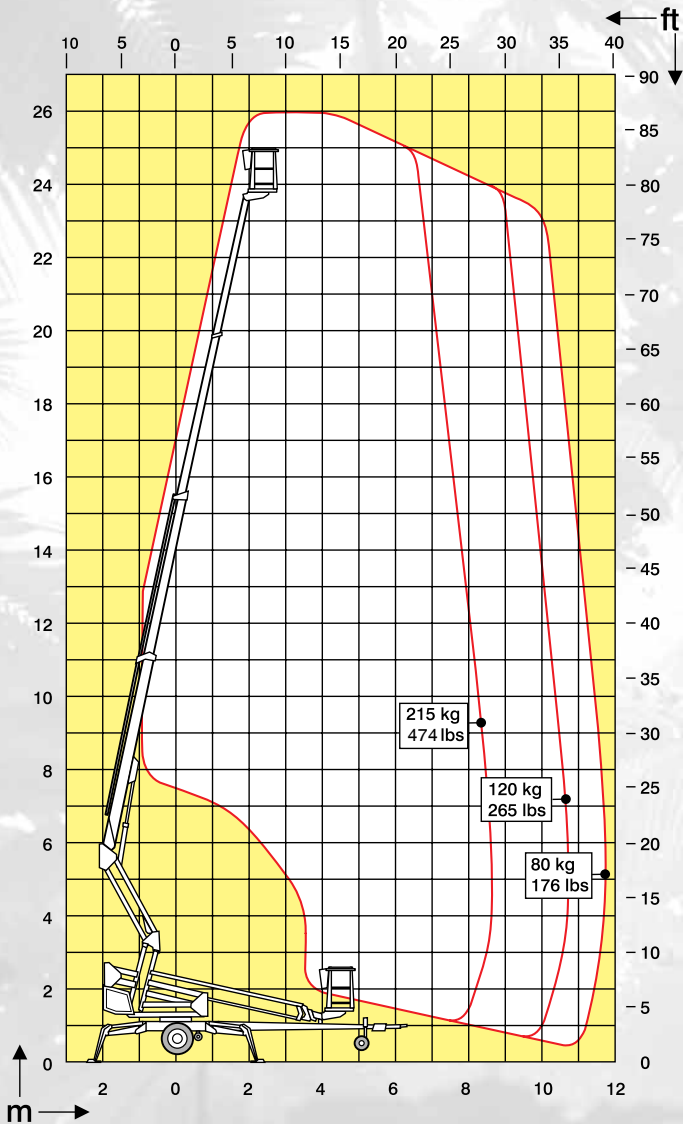


DINO[®] 260XT

Visibly above the others



Technical specification on DINO® 260XT



The basket of the DINO 260XT is spacious. Stepless control of boom movements is possible with two joysticks.



The DINO 260XT has a riser that gives the unit an up-and-over capability.



The drive mechanism enables the DINO 260XT to be moved easily around the job site. The system is switched on hydraulically.

Working height	26,0 m	85'5"
Platform height	24,0 m	78'10"
Maximum outreach	11,7 m	38'5"
Support width	4,4 m	14'5"
Lifting capacity	215 kg	475 lbs
Basket size	0,7 x 1,45 m	2'4" x 4'9"
Boom rotation	continuous	continuous
Basket rotation	90°	90°
Boom control	proportional	proportional
Transport length	8,25 m	27'1"
Transport width	2,04 m	6'8"
Transport height	2,33 m	7'8"
Weight	3450 kg	7600 lbs
Driving system	standard	standard
AC-socket in the basket	standard	standard
Power supply	230 VAC	230 VAC
Gradeability	25 %	25 %
Equipped with petrol aggregate		
Diesel aggregate	optional	

The specification is subject to change without notice.

DINO® and Dino Lift® are trademarks registered by the company Dino Lift Oy.